

## “Play and Loop II”

Curated by Nick Yu

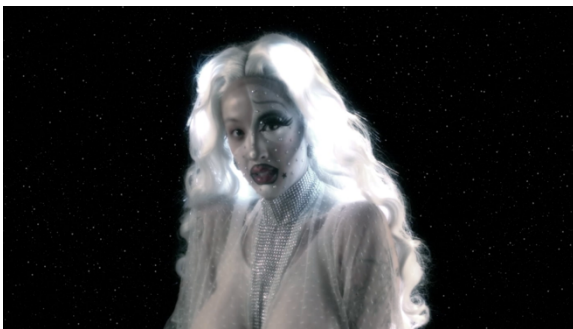
**Featured artists: Sophia Al-Maria, Patty Chang, Luke Ching Chin Wai, Hao Jingban, Isaac Julien, Jiang Zhi, Lai Lon Hin, Leung Chi Wo, Nira Pereg, Shen Xin, Victoria Sin, Angela Su, Pilvi Takala, Eason Tsang Ka Wai, Wang Bing, Wong Kit Yi, Ming Wong, Wong Wai Yin**

**30 June – 22 August 2020**

Venue: Blindspot Gallery (15/F, Po Chai Industrial Building, 28 Wong Chuk Hang Road, Wong Chuk Hang, Hong Kong)  
Opening Hours: Tuesday to Saturday, 10:30 am to 6:30 pm (Sunday and Monday by appointment only); closed on public holidays

### **WEEK 7: Stellar Contagion | Angela Su, Sophia Al-Maria, Victoria Sin**

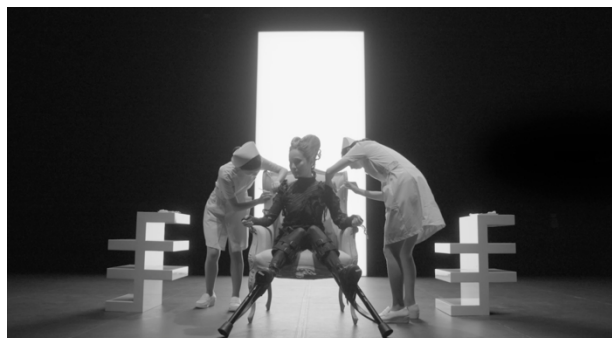
As the coronavirus unleashes unto the world, the origin of the virus remains a mystery, and thus becomes a hotbed of scientific investigation, conspiracy theories and thinly veiled racist rhetoric. Titled “Stellar Contagion”, week 7 features *BCE* (2019) by Sophia Al-Maria and Victoria Sin, and *Cosmic Call* (2019) by Angela Su. Using speculative fiction as method, the artists create daring eschatological theories and genesis mythologies by thinking in supra/extra-terrestrial terms. Using their own bodies in the performance of creation, promulgation, and destruction, they unleash the alien virus upon all of us.



The beginning of the universe was not a big bang, but a refusal. A refusal of hierarchy, a refusal of the heteronormative hegemony, and a refusal of the status quo. Commissioned by Whitechapel Gallery, *BCE* is a collaboration between Sophia Al-Maria as director, and Victoria Sin as the writer and performer. Not native but expansive, *BCE* charts distances spanning stellar imagination, biological mechanisms, coital acclimax, and sensual intelligence. Two stars loom large in the monologue: Octavia Butler and Ursula Le Guin. “God is change” (Butler) and The Carrier Bag Theory of Fiction (Le Guin) become the two guiding

principles to create a universe from nil. Gxd [an intentional misspelling of God], vocalized always in the video through a scratchy glitch, is neither god nor goddess, but transcends, predates and postdates genders. Abiogenesis, disintegration, implosion: Reverse engineering Pandora’s box. Spider webs, entanglements into the constellation of genius: Pythagorean resonances. Constellations so wide, that it might contain so many stars, so many worlds, so many ways of being alive!

If *BCE* presents the vision of an arachnid-gxd spinning its spider web forever as a punishment for challenging Athena, Angela Su’s *Cosmic Call* sees the virus as a cephalopod spreading its tentacles across astronomy, borders, and archives. *Cosmic Call* is commissioned by the Wellcome Trust for the *Contagious Cities* project in early 2019, the timing of which only seems prescient now with COVID-19. *Cosmic Call* proposes an alternative to the western medicine-centric outbreak narrative of epidemics, and explores the cosmological and extra-terrestrial origin of infections and diseases based on a review of ancient manuscripts and a critique of Chinese medicine. The video ends with the artist injecting herself with different kinds of virus and bacteria, thereby becoming one-and-multitude with the viral paradoxes, an origin story and an end-game scenario at once.



“The proper, fitting shape of the novel might be that of a sack, a bag. A book holds words.  
 Words hold things. They bear meanings. A novel is a *medicine* bundle,  
 holding things in a particular, powerful relation to one another and to us.”  
 -Ursula Le Guin

## About Play and Loop II

“Play and Loop II” is the second iteration of an eight-week screening programme at Blindspot Gallery, featuring works by 18 regional and international artists. Each week, video works by two artists will be featured and played continuously on loop during the opening hours of the gallery. The selected works congeal into weekly themes pertinent to our current state of affairs and being. Sedimenting, speculating and fantasizing, these weekly artwork pairings become navigation points between an unruly past and an uncharted future.

### Screening Schedule:

Week 1 27.6 – 4.7	<b>Heavy Hands</b>	<b>Pilvi Takala</b> <b>Leung Chi Wo</b>	<i>The Stroker</i> (2018) <i>Sign</i> (2008)	15'16" 13'00"
Week 2 7 – 11.7	<b>Still Dancing</b>	<b>Ming Wong</b> <b>Hao Jingban</b>	<i>Next Year   L'Année Prochaine   明年</i> (2016) <i>An Afternoon Ball</i> (2013)	17'40" 24'21"
Week 3 14 – 18.7	<b>Daily Phobia</b>	<b>Patty Chang</b> <b>Nira Pereg</b>	<i>Milk Debt Hong Kong, Jun 8, 2019</i> (2019) <i>67 Bows</i> (2006) <i>and Melancholy</i> (2009)	13'11" 5'51" 3'02"
Week 4 21 – 25.7	<b>Going Away</b>	<b>Patty Chang</b> <b>Wong Kit Yi</b>	<i>Shangri-La</i> (2005) <i>A River in the Freezer</i> (2017)	40'00" 25'25"
Week 5 28.7 – 1.8	<b>Exile</b>	<b>Wang Bing</b> <b>Shen Xin</b>	<i>Traces</i> (2014) <i>Strongholds</i> (2016)	29'00" 71'00"
Week 6 4 – 8.8	<b>Chase</b>	<b>Isaac Julien</b> <b>Jiang Zhi</b>	<i>Baltimore</i> (2003) <i>In the Woods</i> (2018)	11'56" 22'31"
Week 7 11 – 15.8	<b>Stellar</b> <b>Contagion</b>	<b>Angela Su</b> <b>Sophia Al-Maria +</b> <b>Victoria Sin</b>	<i>Cosmic Call</i> (2019) <i>BCE</i> (2019)	12'43" 9'43"
Week 8 18 – 22.8	<b>Progress</b>	<b>Wang Bing</b> <b>Jiang Zhi</b>	<i>Crude Oil</i> (2009) <i>The Nail</i> (2007)	14 hrs 85'15"
Also on view		<b>Luke Ching Chin Wai</b> <b>Lai Lon Hin</b> <b>Eason Tsang Ka Wai</b> <b>Wong Wai Yin</b>	<i>Screensaver: Sunsets</i> (2014) <i>Black Dream</i> (2019) <i>Music Box</i> (2018) <i>Housework No.3</i> (2016) <i>Clearing ten thorns</i> (2016)	39'07" 6'22" 8'16" 11'34" 1'33"

### About Blindspot Gallery

Set up in 2010, Blindspot Gallery is a Hong Kong-based contemporary art gallery. The gallery began with a primary focus on contemporary photography and image-based art, and has evolved to include diverse media in contemporary art. The gallery represents both emerging and established artists, mainly from Hong Kong and the region but also beyond.

For enquiries and media interviews, please contact Ms. May Wong at 2517 6238 or by email [info@blindspotgallery.com](mailto:info@blindspotgallery.com)

Image Caption:

**Sophia Al-Maria, Victoria Sin, BCE**, 2019, HD single channel video, 9'43" (Image courtesy of artist, Native Informant, and Blindspot Gallery)

**Angela Su, Cosmic Call**, 2019, single channel video, 12'43" (Image courtesy of artist, and Blindspot Gallery)